



# Global Health Expenditure Database

(http://www.who.int)



Data Explorer

Visualisations




Search

Documentation Centre

Help

(nha/database/Home/Index/en) > Visualisations (nha/database/QuickReports/Index/en) > Country Profiles

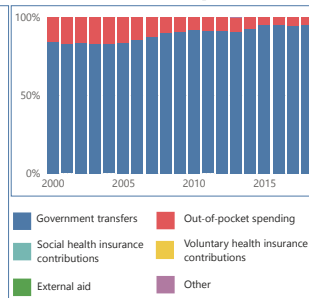
Selected Country:

## Health Expenditure Profile Brunei Darussalam

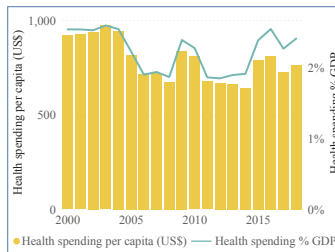
Key Statistics

	2000	2006	2012	2018
Health spending US\$ per capita (CHE)	508.5	654.7	883.7	763.2
Government health spending % Health spending (GGHE-D%CHE)	84.2%	85.3%	91.1%	95.1%
Out-of-pocket spending % Health spending (OOPS%CHE)	15.8%	14.7%	8.9%	4.9%
Priority to health (GGHE-D%GGE)	5.7%	5.8%	5.4%	7.1%
GDP US\$ per capita	19,996	34,398	47,741	31,628

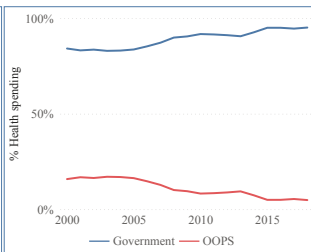
Sources of Health Expenditure



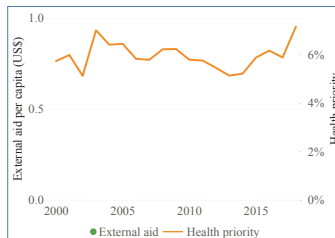
Current Health Expenditure (CHE%GDP and CHE per capita, constant US\$ 2018)



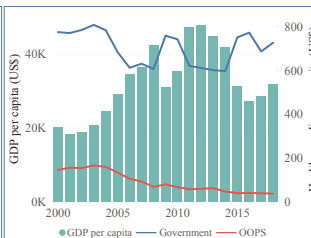
Domestic Government Expenditure and OOPS (GGHE-D%CHE and OOPS%CHE)



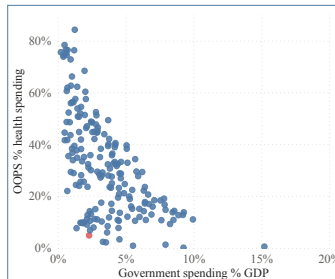
External aid and Health Priority (External aid per capita and GGHE-D%GGE)



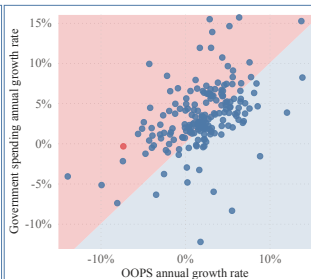
GDP, government health spending, and out-of-pocket per capita (constant US\$ 2018)



OOPS share of health spending and government health spending as a share of GDP, 2018



Growth of per capita government health spending and OOPS in real terms, 2000-2018



Microsoft Power BI

